

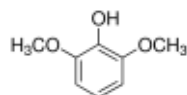
3050 Spruce Street, Saint Louis, MO 63103, USA

Website: [www.sigmaaldrich.com](http://www.sigmaaldrich.com)Email USA: [techserv@sial.com](mailto:techserv@sial.com)Outside USA: [eurtechserv@sial.com](mailto:eurtechserv@sial.com)

## Product Specification

Product Name:  
2,6-Dimethoxyphenol - natural, ≥96%

**Product Number:** W313726  
**CAS Number:** 91-10-1  
**MDL:** MFCD00064434  
**Formula:** C<sub>8</sub>H<sub>10</sub>O<sub>3</sub>  
**Formula Weight:** 154.16 g/mol



TEST	Specification
------	---------------

Appearance (Color)	Off White to Dark Brown
Appearance (Form)	Powder or Crystals or Crystalline Chunk(s) or Granule or Flakes or Solid
Initial Melting Point	≥ 53 °C
Final Melting Point	≤ 57 °C
Infrared spectrum	Conforms to Structure
Purity (GC)	≥ 96.0 %
Arsenic (As)	≤ 3 ppm
Cadmium (Cd)	≤ 1 ppm
Mercury (Hg)	≤ 1 ppm
Lead (Pb)	≤ 10 ppm
Expiration Date Period	-----
5 Years	

Specification: PRD.0.ZQ5.10000075030

Sigma-Aldrich warrants, that at the time of the quality release or subsequent retest date this product conformed to the information contained in this publication. The current Specification sheet may be available at [Sigma-Aldrich.com](http://Sigma-Aldrich.com). For further inquiries, please contact Technical Service. Purchaser must determine the suitability of the product for its particular use. See reverse side of invoice or packing slip for additional terms and conditions of sale.