

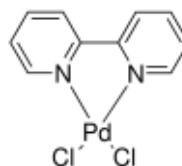
3050 Spruce Street, Saint Louis, MO 63103, USA

Website: www.sigmaldrich.comEmail USA: techserv@sial.comOutside USA: eurtechserv@sial.com

Product Specification

Product Name:
(2,2'-Bipyridine)dichloropalladium(II)

Product Number: 365947
CAS Number: 14871-92-2
MDL: MFCD00134305
Formula: C₁₀H₈Cl₂N₂Pd
Formula Weight: 333.51 g/mol



TEST

Specification

Appearance (Color)	Yellow to Orange
Appearance (Form)	Powder or Crystals
Infrared spectrum	Conforms to Structure
Gravimetric Analysis % Pd with Dimethylglyoxime	30.8 - 32.9 %

Specification: PRD.1.ZQ5.10000028226

Sigma-Aldrich warrants, that at the time of the quality release or subsequent retest date this product conformed to the information contained in this publication. The current Specification sheet may be available at Sigma-Aldrich.com. For further inquiries, please contact Technical Service. Purchaser must determine the suitability of the product for its particular use. See reverse side of invoice or packing slip for additional terms and conditions of sale.