

3050 Spruce Street, Saint Louis, MO 63103, USA

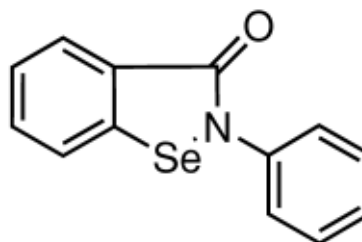
Website: www.sigmaaldrich.comEmail USA: techserv@sial.comOutside USA: eurtechserv@sial.com

Product Specification

Product Name:
Ebselen

Product Number: **E3520**
CAS Number: 60940-34-3

Formula: C₁₃H₉NOSe
Formula Weight: 274.18 g/mol



TEST

Specification

Appearance (Form)	Powder
Appearance (Colour)	Faint Yellow to Light Yellow
Solubility (Solvent)	Chloroform
Solubility (Conc)	19.60 - 20.40 mg/ml
Solubility (Turbidity)	Clear
Solubility (Color)	Yellow
Elemental Anal. (%C anhydrous)	56.45 - 57.45 %
Elemental Anal. (%N anhydrous)	4.61 - 5.61 %
NMR (Solvent)	CD ₃ OD
Identity by NMR	Consistent
Purity (TLC)	≥ 98.00 %
Initial Melting Point	≥ 176 °C
Final Melting Point	≤ 182 °C
Recommended Retest Period	-----
3 Years	

Specification: PRE.0.ZQ5.10000001242

Sigma-Aldrich warrants, that at the time of the quality release or subsequent retest date this product conformed to the information contained in this publication. The current Specification sheet may be available at Sigma-Aldrich.com. For further inquiries, please contact Technical Service. Purchaser must determine the suitability of the product for its particular use. See reverse side of invoice or packing slip for additional terms and conditions of sale.