

3050 Spruce Street, Saint Louis, MO 63103, USA

Website: www.sigmaaldrich.com

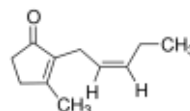
Email USA: techserv@sial.com

Outside USA: eurtechserv@sial.com

Product Specification

Product Name:
cis-Jasmone - stabilized

Product Number: W319600
CAS Number: 488-10-8
MDL: MFCD00001402
Formula: C₁₁H₁₆O
Formula Weight: 164.24 g/mol



TEST	Specification
Appearance (Color)	Colorless to Light Yellow
Appearance (Form)	Liquid
Refractive index at 20 ° C	1.496 - 1.500
Infrared spectrum	Conforms to Structure
Purity (GC)	≥ 85.0 %
Alpha Tocopherol	0.01 - 0.20 %
Arsenic (As)	≤ 3 ppm
Cadmium (Cd)	≤ 1 ppm
Mercury (Hg)	≤ 1 ppm
Lead (Pb)	≤ 10 ppm
Expiration Date Period	-----
5 Years	

Specification: PRD.3.ZQ5.1000004884

Sigma-Aldrich warrants, that at the time of the quality release or subsequent retest date this product conformed to the information contained in this publication. The current Specification sheet may be available at Sigma-Aldrich.com. For further inquiries, please contact Technical Service. Purchaser must determine the suitability of the product for its particular use. See reverse side of invoice or packing slip for additional terms and conditions of sale.