

3050 Spruce Street, Saint Louis, MO 63103, USA

Website: www.sigmaaldrich.com

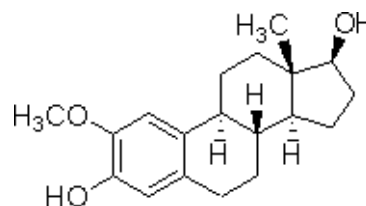
Email USA: techserv@sial.com

Outside USA: eurtechserv@sial.com

## Product Specification

Product Name:  
2-Methoxyestradiol - powder

Product Number: **M6383**  
CAS Number: 362-07-2  
Formula: C<sub>19</sub>H<sub>26</sub>O<sub>3</sub>  
Formula Weight: 302.42 AMU



| TEST                           | Specification             |
|--------------------------------|---------------------------|
| Appearance (Form)              | Powder                    |
| Appearance (Colour)            | White to Faint Yellow     |
| Solubility (Solvent)           | Ethanol                   |
| Solubility (Conc)              | 9 - 11 mg/ml              |
| Solubility (Heating)           | Yes                       |
| Solubility (Turbidity)         | Clear                     |
| Solubility (Color)             | Colorless to Faint Yellow |
| Water (by Karl Fischer)        |                           |
| Elemental Anal. (%C anhydrous) | 74.9 - 75.9 %             |
| Purity (TLC)                   | ≥ 98.0 %                  |
| Purity (HPLC)                  | ≥ 98.0 %                  |
| NMR (Solvent)                  | CDCl <sub>3</sub>         |
| Identity by NMR                | Consistent                |
| NMR (Residual Solvent 1)       | Acetone                   |
| NMR (% Solvent 1)              | ≤ 1.0 %                   |
| NMR (Residual Solvent 2)       | Methanol                  |
| NMR (% Solvent 2)              | ≤ 1.0 %                   |
| NMR (Total % Resid.Solvents)   | ≤ 1.0 %                   |
| UV (Solvent)                   | Ethanol                   |
| UV (Lambda max 1)              | 284 - 287 nm              |
| UV (EmM at Lambda max 1)       | 3.6 - 4.1                 |
| Specific Rotation (Solvent)    | Chloroform                |
| Specific Rotation (Conc)       | 4.5 - 5.5 mg/ml           |
| Specific Rotation (Alpha D)    | 102 - 113 deg             |

Sigma-Aldrich warrants, that at the time of the quality release or subsequent retest date this product conformed to the information contained in this publication. The current Specification sheet may be available at Sigma-Aldrich.com. For further inquiries, please contact Technical Service. Purchaser must determine the suitability of the product for its particular use. See reverse side of invoice or packing slip for additional terms and conditions of sale.

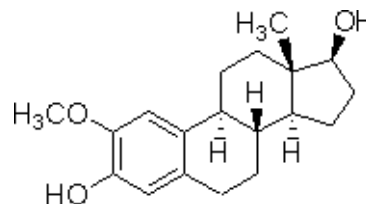
3050 Spruce Street, Saint Louis, MO 63103, USA

Website: [www.sigmaaldrich.com](http://www.sigmaaldrich.com)Email USA: [techserv@sial.com](mailto:techserv@sial.com)Outside USA: [eurtechserv@sial.com](mailto:eurtechserv@sial.com)

## Product Specification

Product Name:  
2-Methoxyestradiol - powder

Product Number: **M6383**  
CAS Number: 362-07-2  
Formula: C<sub>19</sub>H<sub>26</sub>O<sub>3</sub>  
Formula Weight: 302.42 AMU



| TEST | Specification |
|------|---------------|
|------|---------------|

|                           |       |
|---------------------------|-------|
| Recommended Retest Period | ----- |
| 3 Years                   |       |

Specification: PRE.4.ZQ5.10000001252

Sigma-Aldrich warrants, that at the time of the quality release or subsequent retest date this product conformed to the information contained in this publication. The current Specification sheet may be available at [Sigma-Aldrich.com](http://Sigma-Aldrich.com). For further inquiries, please contact Technical Service. Purchaser must determine the suitability of the product for its particular use. See reverse side of invoice or packing slip for additional terms and conditions of sale.