

3050 Spruce Street, Saint Louis, MO 63103, USA

Website: [www.sigmaldrich.com](http://www.sigmaldrich.com)Email USA: [techserv@sial.com](mailto:techserv@sial.com)Outside USA: [eurtechserv@sial.com](mailto:eurtechserv@sial.com)

## Product Specification

Product Name:

Sodium DL-lactate solution – synthetic, syrup, BioXtra, suitable for mouse embryo cell culture, 60 % (w/w)

Product Number:

L7900

CAS Number:

72-17-3

MDL:

MFCD00065400

Formula:

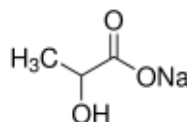
C<sub>3</sub>H<sub>5</sub>NaO<sub>3</sub>

Formula Weight:

112.06 g/mol

Storage Temperature:

2 - 8 °C



### TEST

### Specification

Embryo Test	Pass
> or = 80% of the embryos developing to the hatched blastocyst stage	
Recommended Retest Period	-----
3 years	
Appearance (Color)	Colorless
Appearance (Form)	Viscous Liquid
Appearance (Turbidity)	Clear
Water (by Karl Fischer)	35 - 45 %
Sodium (Na)	10.2 - 13.7 %
Purity (Enzymatic)	27 - 33 %
L-isomer	

Specification: PRD.1.ZQ5.10000032140

Sigma-Aldrich warrants, that at the time of the quality release or subsequent retest date this product conformed to the information contained in this publication. The current Specification sheet may be available at [Sigma-Aldrich.com](http://Sigma-Aldrich.com). For further inquiries, please contact Technical Service. Purchaser must determine the suitability of the product for its particular use. See reverse side of invoice or packing slip for additional terms and conditions of sale.