

3050 Spruce Street, Saint Louis, MO 63103, USA

Website: [www.sigmaaldrich.com](http://www.sigmaaldrich.com)Email USA: [techserv@sial.com](mailto:techserv@sial.com)Outside USA: [eurtechserv@sial.com](mailto:eurtechserv@sial.com)

## Product Specification

Product Name:

Sodium L-lactate-<sup>13</sup>C<sub>3</sub> solution - 45-55 % (w/w) in H<sub>2</sub>O, ≥99 atom % <sup>13</sup>C, ≥98% (CP), ≥98% (Chiral purity, HPLC)

Product Number:

485926

MDL:

MFCD00084069

Formula:

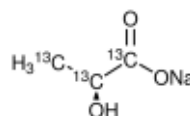
13C<sub>3</sub>H<sub>5</sub>NaO<sub>3</sub>

Formula Weight:

115.01 g/mol

Storage Temperature:

-20 °C



TEST	Specification
Appearance (Clarity)	Clear
Appearance (Color)	Colorless to Yellow
Appearance (Form)	Liquid Solution
Proton NMR Spectrum	Conforms to Structure
<sup>13</sup> C NMR Spectrum	Conforms to Structure
Proton NMR (ATOM % <sup>13</sup> C)	≥ 99.0 %
Purity by Proton NMR	≥ 98.0 %
Chiral HPLC	≥ 98.0 %
Concentration % w/w	45 - 55 %

Specification: PRD.0.ZQ5.10000102445

Sigma-Aldrich warrants, that at the time of the quality release or subsequent retest date this product conformed to the information contained in this publication. The current Specification sheet may be available at [Sigma-Aldrich.com](http://Sigma-Aldrich.com). For further inquiries, please contact Technical Service. Purchaser must determine the suitability of the product for its particular use. See reverse side of invoice or packing slip for additional terms and conditions of sale.