

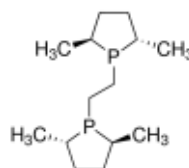
3050 Spruce Street, Saint Louis, MO 63103, USA

Website: www.sigmaldrich.comEmail USA: techserv@sial.comOutside USA: eurtechserv@sial.com

Product Specification

Product Name:
(-)-1,2-Bis[(2S,5S)-2,5-dimethylphospholano]ethane - kanata purity

Product Number: 665207
CAS Number: 136779-26-5
MDL: MFCD01073771
Formula: C₁₄H₂₈P₂
Formula Weight: 258.32 g/mol



TEST

Specification

Appearance (Color)	Colorless to Yellow
Appearance (Form)	Liquid
Proton NMR spectrum	Conforms to Structure
Phosphorus NMR Spectra	Conforms to Structure
Optical Rotation	-200.0 - -170.0 deg
c = 1%; Chloroform	

Specification: PRD.0.ZQ5.10000053743

Sigma-Aldrich warrants, that at the time of the quality release or subsequent retest date this product conformed to the information contained in this publication. The current Specification sheet may be available at Sigma-Aldrich.com. For further inquiries, please contact Technical Service. Purchaser must determine the suitability of the product for its particular use. See reverse side of invoice or packing slip for additional terms and conditions of sale.