

3050 Spruce Street, Saint Louis, MO 63103, USA

Website: [www.sigmaaldrich.com](http://www.sigmaaldrich.com)Email USA: [techserv@sial.com](mailto:techserv@sial.com)Outside USA: [eurtechserv@sial.com](mailto:eurtechserv@sial.com)**Product Specification**

Product Name:

Crystal Violet Dye content  $\geq 90\%$ 

Product Number:

**C3886**

CAS Number:

548-62-9

MDL:

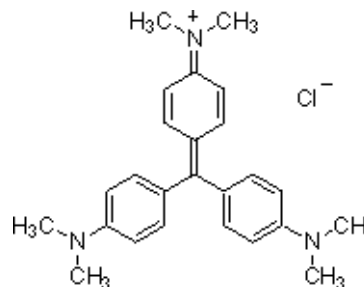
MFCD00011750

Formula:

C<sub>25</sub>H<sub>30</sub>ClN<sub>3</sub>

Formula Weight:

407.98 g/mol

**TEST****Specification**

Appearance (Color)

Light Green to Dark Green-Brown

Appearance (Form)

Powder

Solubility (Color)

Dark Purple

5 mg + 5 mL, H<sub>2</sub>O

% Dye content

 $\geq 90\%$ 

Recommended Retest Period

4 Years

**Remarks:**.  
.

Specification Date : 11/30/2010

Sigma-Aldrich warrants, that at the time of the quality release or subsequent retest date this product conformed to the information contained in this publication. The current Specification sheet may be available at [Sigma-Aldrich.com](http://Sigma-Aldrich.com). For further inquiries, please contact Technical Service. Purchaser must determine the suitability of the product for its particular use. See reverse side of invoice or packing slip for additional terms and conditions of sale.