

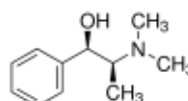
3050 Spruce Street, Saint Louis, MO 63103, USA

Website: www.sigmaaldrich.comEmail USA: techserv@sial.comOutside USA: eurtechserv@sial.com

Product Specification

Product Name:
(1R,2S)-(-)-N-Methylephedrine - 99%

Product Number: 235210
CAS Number: 552-79-4
MDL: MFCD00004504
Formula: C₁₁H₁₇NO
Formula Weight: 179.26 g/mol
Storage Temperature: 2 - 8 °C



TEST	Specification
------	---------------

Appearance (Color)	White
Appearance (Form)	Powder or Crystals or Chunk(s)
Infrared spectrum	Conforms to Structure
Proton NMR spectra	Conforms to Structure
Carbon	71.9 - 74.8 %
Nitrogen	7.5 - 8.1 %
Purity (Titration by HCL04)	98.5 - 101.5 %
Optical Rotation C= 4.5%, Methanol	-32 - -28 deg

Specification: PRD.0.ZQ5.10000065591

Sigma-Aldrich warrants, that at the time of the quality release or subsequent retest date this product conformed to the information contained in this publication. The current Specification sheet may be available at Sigma-Aldrich.com. For further inquiries, please contact Technical Service. Purchaser must determine the suitability of the product for its particular use. See reverse side of invoice or packing slip for additional terms and conditions of sale.