

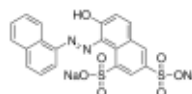
3050 Spruce Street, Saint Louis, MO 63103, USA

Website: [www.sigmaaldrich.com](http://www.sigmaaldrich.com)Email USA: [techserv@sial.com](mailto:techserv@sial.com)Outside USA: [eurtechserv@sial.com](mailto:eurtechserv@sial.com)

## Product Specification

Product Name:  
Crystal Ponceau 6R

Product Number: **C0644**  
CAS Number: 2766-77-0  
MDL: MFCD00013279  
Formula: C<sub>20</sub>H<sub>12</sub>N<sub>2</sub>Na<sub>2</sub>O<sub>7</sub>S<sub>2</sub>  
Formula Weight: 502.43 g/mol



TEST	Specification
Appearance (Form)	Powder
Nitrogen	3.8 - 5.6 %
Dye Content	≥ 70 %
based on nitrogen	
Solubility (Color)	Dark Red
10 mg/ml, H <sub>2</sub> O	
E1%	≥ 300 %
in H <sub>2</sub> O	
Wavelength	508 - 512 nm

Specification: PRD.1.ZQ5.10000040058

Sigma-Aldrich warrants, that at the time of the quality release or subsequent retest date this product conformed to the information contained in this publication. The current Specification sheet may be available at [Sigma-Aldrich.com](http://Sigma-Aldrich.com). For further inquiries, please contact Technical Service. Purchaser must determine the suitability of the product for its particular use. See reverse side of invoice or packing slip for additional terms and conditions of sale.

