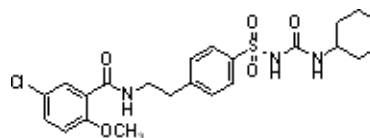


3050 Spruce Street, Saint Louis, MO 63103, USA

Website: www.sigmaaldrich.comEmail USA: techserv@sial.comOutside USA: eurtechserv@sial.com**Product Specification**

Product Name:
Glybenc lamide ≥99% (HPLC)

Product Number: **G0639**
CAS Number: 10238-21-8
MDL: MFCD00056625
Formula: C₂₃H₂₈ClN₃O₅S
Formula Weight: 494.00 g/mol
Storage Temperature: 2 - 8 °C

**TEST****Specification**

Appearance (Color)	White to Off-White
Appearance (Form)	Powder
Solubility (Color)	Colorless to Faint Yellow
Solubility (Turbidity) 50 mg/mL, CHCl ₃	Clear to Hazy
Infrared spectrum	Conforms to Structure
Purity (HPLC)	≥99 %
Recommended Retest Period 4 years	-----

Remarks:

Specification Date : 02/15/2011

Sigma-Aldrich warrants, that at the time of the quality release or subsequent retest date this product conformed to the information contained in this publication. The current Specification sheet may be available at Sigma-Aldrich.com. For further inquiries, please contact Technical Service. Purchaser must determine the suitability of the product for its particular use. See reverse side of invoice or packing slip for additional terms and conditions of sale.