

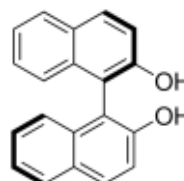
3050 Spruce Street, Saint Louis, MO 63103, USA

Website: www.sigmaaldrich.comEmail USA: techserv@sial.comOutside USA: eurtechserv@sial.com

Product Specification

Product Name:
(R)-(+)-1,1'-Bi(2-naphthol) - 99%

Product Number: 246948
CAS Number: 18531-94-7
MDL: MFCD00004068
Formula: C₂₀H₁₄O₂
Formula Weight: 286.32 g/mol



TEST

Specification

Appearance (Color)	White to Off-White
Appearance (Form)	Powder or Crystals
Infrared spectrum	Conforms to Structure
Carbon	82.6 - 85.1 %
Optical Rotation C = 1%, THF (Fresh)	32.0 - 38.0 deg
Enantiomeric Excess	≥ 98.5 %
Purity (HPLC)	≥ 98.5 %

Specification: PRD.0.ZQ5.10000100264

Sigma-Aldrich warrants, that at the time of the quality release or subsequent retest date this product conformed to the information contained in this publication. The current Specification sheet may be available at Sigma-Aldrich.com. For further inquiries, please contact Technical Service. Purchaser must determine the suitability of the product for its particular use. See reverse side of invoice or packing slip for additional terms and conditions of sale.