

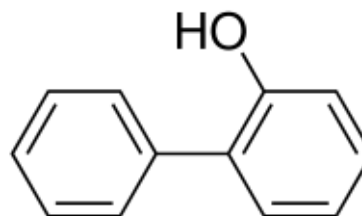
3050 Spruce Street, Saint Louis, MO 63103, USA

Website: www.sigmaaldrich.comEmail USA: techserv@sial.comOutside USA: eurtechserv@sial.com

Product Specification

Product Name:
2-Phenylphenol - ≥99%

Product Number: W395900
CAS Number: 90-43-7
MDL: MFCD00002208
Formula: C₁₂H₁₀O
Formula Weight: 170.21 g/mol



TEST

Specification

Appearance (Color)	White to Faint Pink
Appearance (Form)	Conforms to Requirements
Crystals or Chips	
Initial Melting Point	≥ 56 °C
Final Melting Point	≤ 60 °C
Infrared spectrum	Conforms to Structure
Purity (GC)	≥ 99.0 %
Solubility (Turbidity)	Clear
c = 5%, CHCl ₃	
Solubility (Color)	Conforms to Requirements
Colorless to Faint Pink or Faint Yellow	
Arsenic (As)	≤ 3.0 ppm
Cadmium (Cd)	≤ 1.0 ppm
Mercury (Hg)	≤ 1.0 ppm
Lead (Pb)	≤ 10.0 ppm

Specification: PRD.0.ZQ5.10000019303

Sigma-Aldrich warrants, that at the time of the quality release or subsequent retest date this product conformed to the information contained in this publication. The current Specification sheet may be available at Sigma-Aldrich.com. For further inquiries, please contact Technical Service. Purchaser must determine the suitability of the product for its particular use. See reverse side of invoice or packing slip for additional terms and conditions of sale.