

3050 Spruce Street, Saint Louis, MO 63103, USA

Website: [www.sigmaldrich.com](http://www.sigmaldrich.com)Email USA: [techserv@sial.com](mailto:techserv@sial.com)Outside USA: [eurtechserv@sial.com](mailto:eurtechserv@sial.com)

## Product Specification

Product Name:

Polyethylene - Linear low density, melt index 1.0 g/10 min (190°C/2.16kg)

Product Number:

**428078**

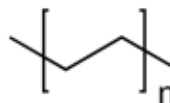
CAS Number:

9002-88-4

MDL:

MFCD00084423

Formula:

C<sub>2</sub>H<sub>4</sub>**TEST****Specification**

Appearance (Color)

Off White

Appearance (Form)

Beads

Raman Spectrum

Conforms to Structure

Melt Index

1.0 G/10 minutes

(190 Deg C, 2.16 kg)

Specification: PRD.0.ZQ5.10000087045

Sigma-Aldrich warrants, that at the time of the quality release or subsequent retest date this product conformed to the information contained in this publication. The current Specification sheet may be available at [Sigma-Aldrich.com](http://Sigma-Aldrich.com). For further inquiries, please contact Technical Service. Purchaser must determine the suitability of the product for its particular use. See reverse side of invoice or packing slip for additional terms and conditions of sale.