

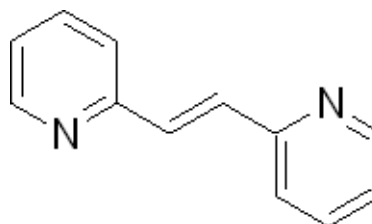
3050 Spruce Street, Saint Louis, MO 63103, USA

Website: www.sigmaaldrich.comEmail USA: techserv@sial.comOutside USA: eurtechserv@sial.com

Product Specification

Product Name:
1,2-Bis(2-pyridyl)ethylene - 97%

Product Number: B52603
CAS Number: 1437-15-6
MDL: MFCD00006356
Formula: C₁₂H₁₀N₂
Formula Weight: 182.22 g/mol



TEST	Specification
Appearance (Color)	Conforms to Requirements
Yellow to Orange to Tan	
Appearance (Form)	Conforms to Requirements
Powder or Crystals	
Infrared spectrum	Conforms to Structure
Carbon	76.3 - 81.9 %
Nitrogen	14.8 - 15.9 %

Specification: PRD.0.ZQ5.10000038762

Sigma-Aldrich warrants, that at the time of the quality release or subsequent retest date this product conformed to the information contained in this publication. The current Specification sheet may be available at Sigma-Aldrich.com. For further inquiries, please contact Technical Service. Purchaser must determine the suitability of the product for its particular use. See reverse side of invoice or packing slip for additional terms and conditions of sale.