

3050 Spruce Street, Saint Louis, MO 63103, USA

Website: www.sigmaldrich.com

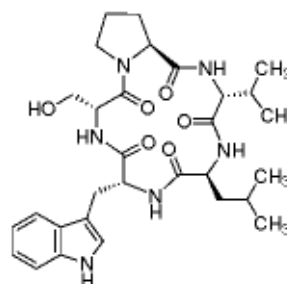
Email USA: techserv@sial.com

Outside USA: eurtechserv@sial.com

Product Specification

Product Name:
JKC 302 ≥97% (HPLC)

Product Number: J4250
CAS Number: 153982-38-8
MDL: MFCD00214627
Formula: C₃₀H₄₂N₆O₆
Formula Weight: 582.69 g/mol
Storage Temperature: -20 °C



TEST

Specification

Appearance (Color)	White to Off-White
Appearance (Form)	Powder
Solubility (Color)	Colorless
Solubility (Turbidity) 1 mg/mL, MeOH	Clear
Peptide Content by AAA	≥80 %
Purity (HPLC)	≥97 %

Remarks:

Specification Date : 01/25/2011

Sigma-Aldrich warrants, that at the time of the quality release or subsequent retest date this product conformed to the information contained in this publication. The current Specification sheet may be available at Sigma-Aldrich.com. For further inquiries, please contact Technical Service. Purchaser must determine the suitability of the product for its particular use. See reverse side of invoice or packing slip for additional terms and conditions of sale.