

3050 Spruce Street, Saint Louis, MO 63103, USA

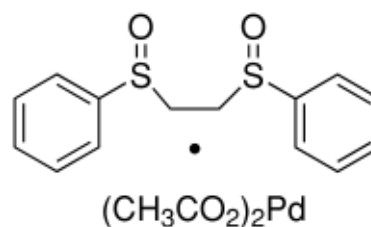
Website: www.sigmaaldrich.comEmail USA: techserv@sial.comOutside USA: eurtechserv@sial.com

Product Specification

Product Name:
1,2-Bis(phenylsulfinyl)ethane palladium(II) acetate

Product Number: 684821

Formula: C₁₈H₂₀O₆PdS₂
Formula Weight: 502.9 g/mol
Storage Temperature: -20 °C



TEST	Specification
Appearance (Color)	Conforms to Requirements
Off-White to Tan to Orange to Dark Brown to Very Dark Red	
Appearance (Form)	Powder
Infrared spectrum and/or ICP Major Analysis	Conforms to Structure
Major Analysis and/or Infrared Spectrum	Confirmed
Confirms Palladium and Sulfur Components	
Carbon or %Pd by Gravimetric Analysis with Dimethylglyoxime	37.4 - 46.8 %
Sulfur or %Pd by Gravimetric Analysis with Dimethylglyoxime	11.1 - 13.9 %

Specification: PRD.0.ZQ5.10000025165

Sigma-Aldrich warrants, that at the time of the quality release or subsequent retest date this product conformed to the information contained in this publication. The current Specification sheet may be available at Sigma-Aldrich.com. For further inquiries, please contact Technical Service. Purchaser must determine the suitability of the product for its particular use. See reverse side of invoice or packing slip for additional terms and conditions of sale.