

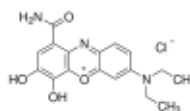
3050 Spruce Street, Saint Louis, MO 63103, USA

Website: www.sigmaldrich.comEmail USA: techserv@sial.comOutside USA: eurtechserv@sial.com

Product Specification

Product Name:
Celestine blue - Dye content 80 %

Product Number: 206342
CAS Number: 1562-90-9
MDL: MFCD00011927
Formula: C₁₇H₁₈ClN₃O₄
Formula Weight: 363.80 g/mol



TEST	Specification
------	---------------

Appearance (Form)	Powder
Infrared spectrum	Conforms to Structure
Wavelength	640 - 650 nm
Extinction Coefficient	≥ 29000
c = 0.01 g/l; Water	
Carbon	≥ 43.8 %
Nitrogen	≥ 9.0 %
TLC	Consistent with Past Lots
Solubility (Color)	Dark Blue to Very Dark Blue and Dark Purple to Very Dark Purple and Blue-Purple
c = 0.1%; In Water	

Specification: PRD.0.ZQ5.10000045797

Sigma-Aldrich warrants, that at the time of the quality release or subsequent retest date this product conformed to the information contained in this publication. The current Specification sheet may be available at Sigma-Aldrich.com. For further inquiries, please contact Technical Service. Purchaser must determine the suitability of the product for its particular use. See reverse side of invoice or packing slip for additional terms and conditions of sale.