

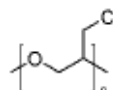
3050 Spruce Street, Saint Louis, MO 63103, USA

Website: [www.sigmaldrich.com](http://www.sigmaldrich.com)Email USA: [techserv@sial.com](mailto:techserv@sial.com)Outside USA: [eurtechserv@sial.com](mailto:eurtechserv@sial.com)

## Product Specification

Product Name:  
Polyepichlorohydrin - average  $M_w$  ~700,000 by GPC

Product Number: **181862**  
CAS Number: 24969-06-0  
MDL: MFCD00084412  
Formula: C<sub>3</sub>H<sub>5</sub>ClO



TEST	Specification
Appearance (Color)	Off-White to Yellow
Appearance (Form)	Conforms
Rubbery Slabs	
Infrared spectrum	Conforms to Structure
Water (by Karl Fischer)	≤ 1.0 %
Residue on ignition (Ash)	≤ 0.5 %
Viscosity	40 - 50
Mooney	

Specification: PRD.1.ZQ5.10000017936

Sigma-Aldrich warrants, that at the time of the quality release or subsequent retest date this product conformed to the information contained in this publication. The current Specification sheet may be available at [Sigma-Aldrich.com](http://Sigma-Aldrich.com). For further inquiries, please contact Technical Service. Purchaser must determine the suitability of the product for its particular use. See reverse side of invoice or packing slip for additional terms and conditions of sale.