

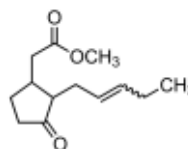
3050 Spruce Street, Saint Louis, MO 63103, USA

Website: www.sigmaaldrich.comEmail USA: techserv@sial.comOutside USA: eurtechserv@sial.com

Product Specification

Product Name:
Methyl jasmonate - 95%

Product Number: 392707
CAS Number: 39924-52-2
MDL: MFCD00151382
Formula: C₁₃H₂₀O₃
Formula Weight: 224.30 g/mol



TEST	Specification
Appearance (Color)	Colorless to Pale Yellow
Appearance (Form)	Liquid
Infrared spectrum	Conforms to Structure
GC Purity (sum of isomers)	≥ 94.5 %A

Specification: PRD.1.ZQ5.10000008494

Sigma-Aldrich warrants, that at the time of the quality release or subsequent retest date this product conformed to the information contained in this publication. The current Specification sheet may be available at Sigma-Aldrich.com. For further inquiries, please contact Technical Service. Purchaser must determine the suitability of the product for its particular use. See reverse side of invoice or packing slip for additional terms and conditions of sale.